

# User Instructions & Safety Manual



## Adjustable Beam Clamp

**Rated Capacities  
1 through to 20 tonnes**

**Note: Operator must read and fully  
understand the operating instructions  
before using this product.**

Products supplied comply with the essential health & safety requirements of the Machinery Directive 2006/42/EC, the Supply of Machinery (Safety) Regulations 2008 and the Health & Safety at Work etc Act 1974 section 6.

George Taylor & Company maintain a policy of progressive development of products and reserve the right to alter, without notice, the specifications shown within this manual.



[www.gtlifting.co.uk](http://www.gtlifting.co.uk)

George Taylor & Company Lifting Gear (Midlands) Ltd.  
Unit 4, Fryers Road, Walsall WS2 7LZ UK

**T** +44 (0)1922 490220 **F** +44 (0)1922 490229 **E** [office@gtlifting.co.uk](mailto:office@gtlifting.co.uk)



# Safety Information



## ALWAYS

- Ensure the operator is properly trained to use beam clamps.
- Store and handle beam clamps correctly.
- Inspect beam clamps and accessories before use and before placing into storage.
- Ensure the supporting structure is adequate for the full load that will be imposed and suitable for the application.
- Check the clamp is of the correct profile and size, or correctly adjusted, for the beam width and that it seats correctly on the beam flange.
- Ensure the beam clamp is strong enough for the full load that will be imposed and that the beam will not be damaged by localised overloading.
- Ensure that the clamp is directly over the centre of gravity of the load and will not be subjected to side loading.

## NEVER

- Use beam clamps which are unidentified or uncertified for lifting applications.
- Never replace bolts, shackles etc without consulting the supplier.
- Throw or drop beam clamps.
- Use beam clamps on damaged or distorted beams.
- Force or wedge hooks of lifting appliances into the attachment eye or fitting.
- Obliquely load beam clamps without the authority of the supplier.

## STORING & HANDLING

Never return damaged beam clamps to storage. They should be dry, clean and protected from corrosion. Where necessary fasteners should be reassembled immediately after removal from the beam.

Beam clamps should not be dropped or thrown.

## SAFE USE

The safe use of beam clamps will largely be governed by the requirements for the lifting appliance with which it is to be used but should take the following matters into account:

### CAUTION

Do not use defective beam clamps, lifting appliances or accessories.

Ensure the structure from which the clamp is to be suspended is undamaged and is adequate for the full load that will be imposed. If any doubt exists consult a Competent Person to confirm suitability.

Ensure the clamp is suitable for the application, correct size and profile for the beam and seats correctly. It must not cause localised overloading.

Ensure the lifting appliance is compatible with the clamp and that hooks or other attachments fit freely into the eye, shackle etc of the clamp.

The clamp must be positioned directly over the centre of gravity of the load and the load must not be allowed to swing or impose an oblique loading.

## INSPECTION & MAINTENANCE

Beam clamps should be cleaned and any moving parts lubricated at appropriate intervals.

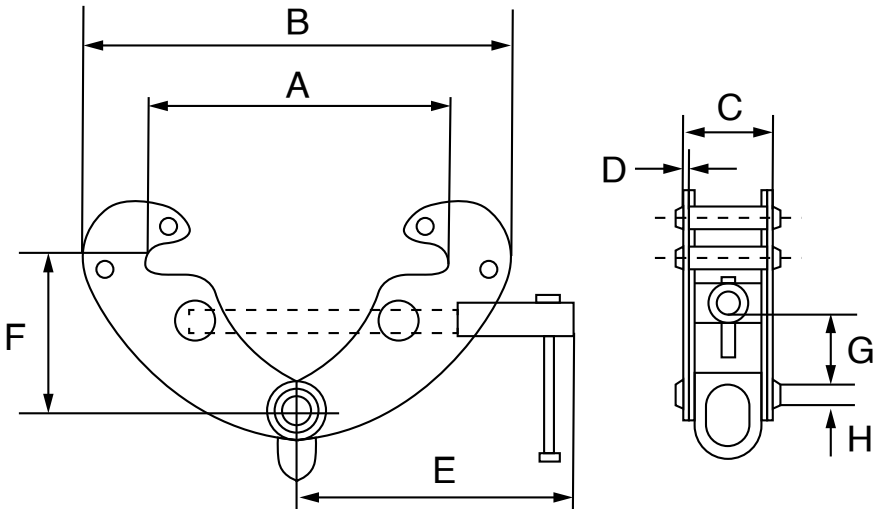
Regularly inspect the beam clamp, in the event of the following defects, remove the beam clamp from service and to a Competent Person for thorough examination:

- Wear.
- Damage or Distortion.
- Cracks.
- Insecure Bolts etc.
- Corrosion.
- Illegible Markings.





## YS Series

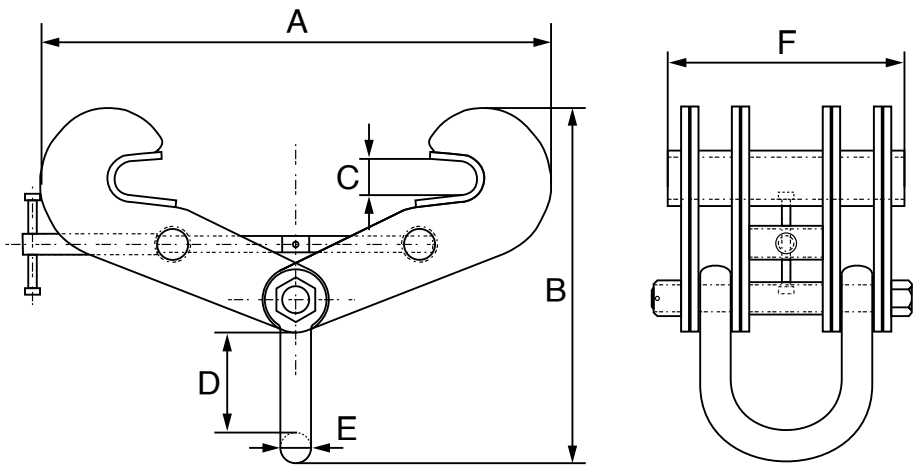


W.L.L. kgs	Beam Range mm	A max mm	B min mm	B max mm	C mm	D mm	E mm	F min mm	F max mm	G min mm	Weight kgs
1,000	75 - 220	295	185	400	80	4	225	90	165	25	3.8
2,000	75 - 220	295	185	400	85	6	225	90	165	25	5
3,000	80 - 320	365	240	520	117	8	258	135	225	45	9
5,000	80 - 320	365	240	520	125	10	258	135	225	45	11
10,000	90 - 320	365	255	520	158	12	280	160	230	50	16





## YS WJC Series

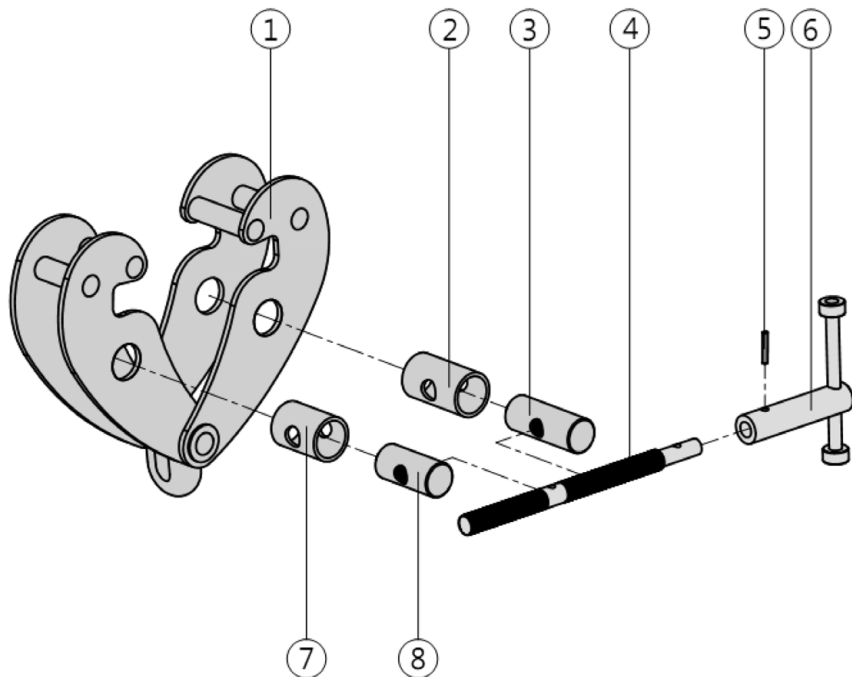


W.L.L. kgs	Beam Range mm	A mm	B mm	C mm	D mm	E mm	F mm	Weight kgs
16,000	203 - 457	700	588	50	203	45	200	50
20,000	203 - 457	720	610	50	210	45	350	81





## YS Series



1.	Body
2.	Long Nut Sleeve
3.	Rod Long Nut
4.	Screw

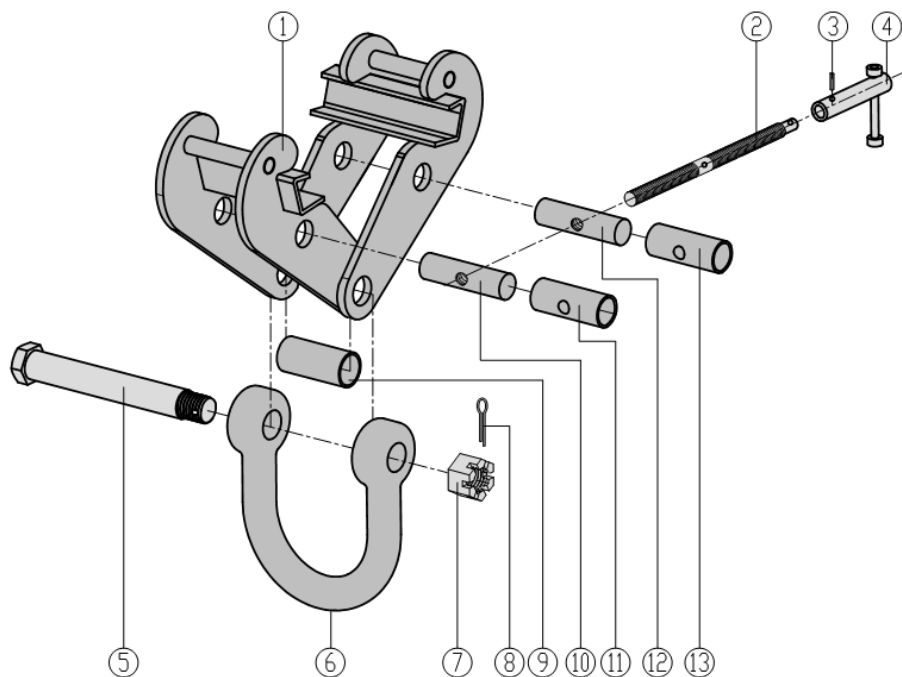
5.	Elastic State Pin
6.	Handle
7.	Short Nut Sleeve
8.	Short Nut



# Spare Parts Breakdown



## YS WJC Series



1.	Casing
2.	Screw
3.	Elastic Cylindrical Pin
4.	Handle Components
5.	Shackle Shaft
6.	Shackle
7.	Hexagon Slotted Nut

8.	Cotter Pin
9.	Shaft Sleeve
10.	Short Nut
11.	Short Nut Sleeve
12.	Long Nut
13.	Long Nut Sleeve



[www.gtlifting.co.uk](http://www.gtlifting.co.uk)

George Taylor & Company Lifting Gear (Midlands) Ltd.  
Unit 4, Fryers Road, Walsall WS2 7LZ UK

T +44 (0)1922 490220 F +44 (0)1922 490229 E [office@gtlifting.co.uk](mailto:office@gtlifting.co.uk)