

GT MKII ADJUSTABLE BEAM CLAMP



Ensure that the beam clamp is of the correct capacity for the load being lifted and that the beam will not be damaged by localised overloading.

Ensure that the clamp is fitted correctly over the centre of gravity of the item being lifted and will not be subjected to side loading.

Before lifting a load ensure that the clamp has been tightened and that the lifting appliance is fitted correctly into the eye of the clamp.

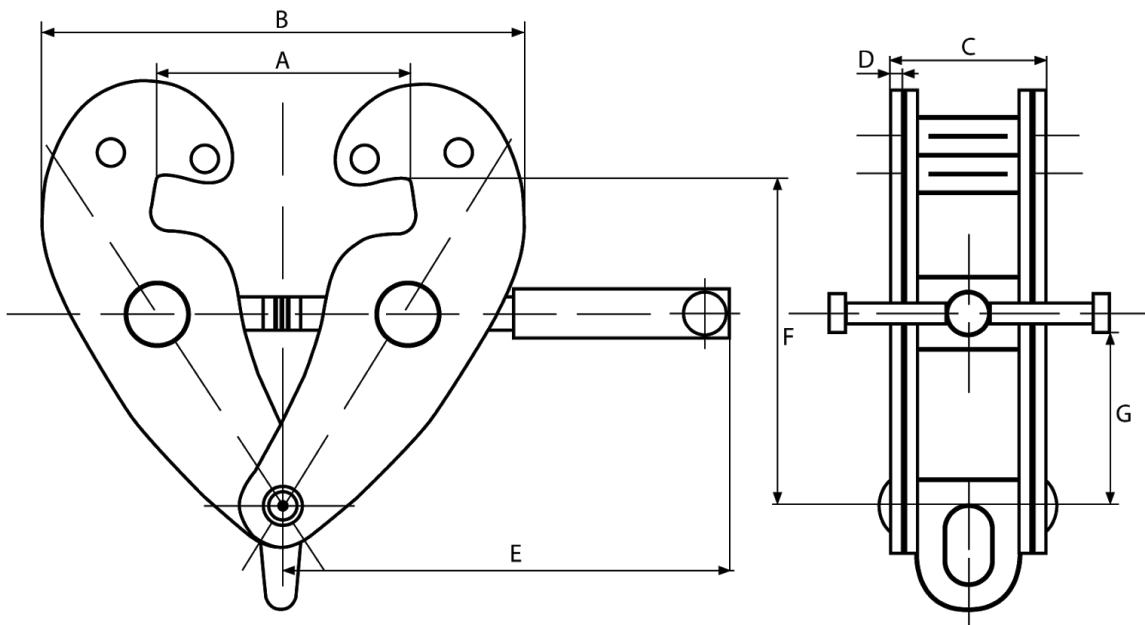
In-service inspection and maintenance

Ensure that beam clamps are kept clean and moving parts are lubricated.

Regularly inspect beam clamps for wear, damage, distortion, cracks and any defects likely to cause a danger.

If any of the above defects are found, remove the beam clamp from service and refer to a competent person.

WLL kgs	Adjustable beam width mm	A max mm	B min mm	B max mm	C mm	D mm	E mm	F min mm	F max mm	G min mm	Nett weight Kgs
1000	75-220	295	185	400	80	4	225	90	165	25	3.8
2000	75-220	295	185	400	85	6	225	90	165	25	5
3000	80-320	365	240	520	117	8	258	135	225	45	9
5000	80-320	365	240	520	125	10	258	135	225	45	11
10000	90-320	365	255	520	158	12	280	160	230	50	16



1. Handle
2. Side plate
3. Shackle
4. Stay
5. Screw mandrel
6. Socket head cap screw
7. Lever handle link cover

