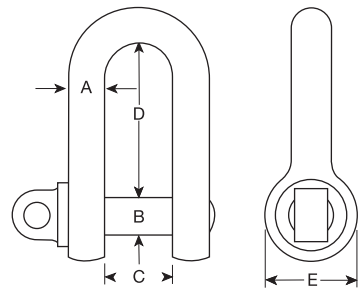


Large Dee Shackles c/w Type A Screw Collar Pin



- Meets the performance requirements of the withdrawn standard BS 3032.
- Higher tensile steel, similar to Grade 4, finish available.
- Self coloured and hot dip galvanised
- Proof load tested to 2 times the W.L.L.
- Minimum breaking load is 4 times the W.L.L.
- Marked with manufacturers mark, size ID mark and W.L.L.



self colour code	galvanised code	W.L.L (tonnes)	A (inches)	B (inches)	C (inches)	D (inches)	E (inches)	weight (kgs/each)
B0101	-	0.25	¼	⅜	½	1	¼	0.10
B0102	B0201	0.60	⅜	½	¾	1 ½	1	0.12
B0103	B0202	0.75	½	⅝	1 ⅛	2 ⅞	1 ¼	0.29
B0104	B0203	1.50	⅝	¾	1 ¼	2 ½	1 ½	0.57
B0105	B0204	2.00	¾	⅞	1 ½	2 ⅞	1 ¾	0.92
B0106	B0205	3.00	⅞	1	1 ¾	3 ¼	2	1.59
B0107	B0206	3.75	1	1 ⅛	2	3 ¾	2 ¼	2.12
B0108	B0207	5.00	1 ⅛	1 ¼	2 ⅞	4 ⅞	2 ½	3.18
B0109	B0208	6.00	1 ¼	1 ⅜	2 ⅝	4 ½	2 ¾	4.54
B0110	B0209	7.00	1 ⅜	1 ½	2 ⅝	5	3	6.06
B0111	B0210	9.50	1 ½	1 ¾	2 ¾	5 ⅝	3 ½	8.74

Small Dee Shackle c/w Type A Screw Collar Pin

- Meets the performance requirements of the withdrawn standard BS 3032.
- Higher tensile steel, similar to Grade 4, finish available.
- Self coloured and hot dip galvanised
- Proof load tested to 2 times the W.L.L.
- Minimum breaking load is 4 times the W.L.L.
- Marked with manufacturers mark, size ID mark and W.L.L.

self colour code	galvanised code	W.L.L (tonnes)	A (inches)	B (inches)	C (inches)	D (inches)	E (inches)	weight (kgs/each)
B0560	B2550	0.30	¼	⅜	⅜	⅞	¾	0.06
B0550	B2551	0.60	⅜	½	⅝	1 ⅜	1	0.15
B0551	B2552	1.00	½	⅝	⅞	1 ⅞	1 ¼	0.33
B0552	B2553	1.75	⅝	¾	1	2 ¼	1 ½	0.61
B0553	B2554	2.50	¾	⅞	1 ¼	2 ¾	1 ¾	0.93
B0554	B2555	3.50	⅞	1	1 ⅜	3 ¼	2	1.80
B0555	B2556	4.50	1	1 ⅛	1 ½	3 ⅝	2 ¼	2.15
B0556	B2557	5.50	1 ⅛	1 ¼	1 ¾	4 ⅞	2 ½	3.02
B0557	B2558	7.00	1 ¼	1 ⅜	1 ⅞	4 ½	2 ¾	4.20
B0558	B2559	8.00	1 ⅜	1 ½	2 ⅞	5	3	5.34
B0559	B2560	10.75	1 ½	1 ¾	2 ⅝	5 ½	3 ½	8.36



George Taylor & Company Lifting Gear (Midlands) Ltd. Brickyard Road, Aldridge, West Midlands WS9 8SR

Telephone: 01922 457916 or visit: www.gtlifting.co.uk

ALL OFFERS ARE SUBJECT TO OUR CONDITIONS OF BUSINESS