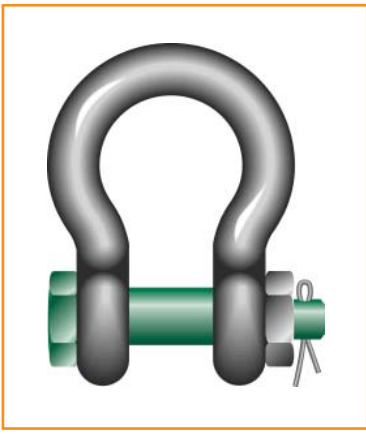
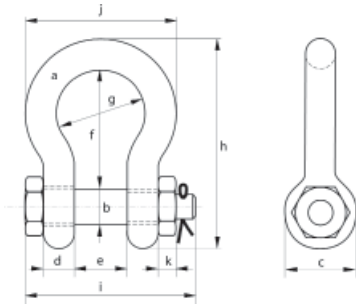


Green Pin Standard Bow Shackles with Safety Nut and Bolt Pin



- Grade 6 high tensile steel, quenched and tempered.
- Minimum breaking load is 6 times the W.L.L.
- Conforms to EN 13889 and meets the performance requirements of US Fed Spec RC-C-271 Type IVA class 2, Grade A.
- Hot dipped galvanised.
- Temperature range -20 ° C upto +200 ° C.
- Supplied with proof load certificate, material certificate available on request.



| W.L.L tons | a mm | b mm | c mm | d mm | e mm | f mm | g mm | h mm | i mm | j mm | k mm | weight kgs |
|---------------|---------|---------|---------|---------|---------|---------|---------|---------|---------|---------|---------|---------------|
| 0.5 | 7 | 8 | 17 | 7 | 12 | 29 | 20 | 54 | 43 | 37 | 4 | 0.06 |
| 0.75 | 9 | 10 | 21 | 9 | 13.5 | 32 | 22 | 61 | 51 | 42 | 5 | 0.11 |
| 1 | 10 | 11 | 23 | 10 | 17 | 36.5 | 26 | 71 | 61 | 49 | 8 | 0.16 |
| 1.5 | 11 | 13 | 26 | 11 | 19 | 43 | 29 | 80 | 68 | 54 | 11 | 0.22 |
| 2 | 13.5 | 16 | 34 | 13.5 | 22 | 51 | 32 | 91 | 83 | 63 | 13 | 0.42 |
| 3.25 | 16 | 19 | 40 | 16 | 27 | 64 | 43 | 114 | 99 | 79 | 17 | 0.74 |
| 4.75 | 19 | 22 | 47 | 19 | 31 | 76 | 51 | 136 | 115 | 94 | 20 | 1.18 |
| 6.5 | 22 | 25 | 53 | 22 | 36 | 83 | 58 | 157 | 131 | 107 | 23 | 1.77 |
| 8.5 | 25 | 28 | 60 | 25 | 43 | 95 | 68 | 176 | 151 | 124 | 25 | 2.58 |
| 9.5 | 28 | 32 | 67 | 28 | 47 | 108 | 75 | 197 | 167 | 137 | 28 | 3.66 |
| 12 | 32 | 35 | 74 | 32 | 51 | 115 | 83 | 218 | 179 | 154 | 31 | 4.91 |
| 13.5 | 35 | 38 | 80 | 35 | 57 | 133 | 92 | 240 | 198 | 170 | 34 | 6.54 |
| 17 | 38 | 42 | 89 | 38 | 60 | 146 | 99 | 262 | 202 | 183 | 19 | 8.19 |
| 25 | 45 | 50 | 104 | 45 | 74 | 178 | 126 | 314 | 244 | 226 | 24 | 14.22 |
| 35 | 50 | 57 | 111 | 50 | 83 | 197 | 138 | 358 | 270 | 250 | 27 | 19.85 |
| 42.5 | 57 | 65 | 134 | 57 | 95 | 222 | 160 | 414 | 302 | 287 | 30 | 28.33 |
| 55 | 65 | 70 | 145 | 65 | 105 | 260 | 180 | 463 | 330 | 329 | 33 | 39.59 |
| 85 | 75 | 83 | 163 | 75 | 127 | 329 | 190 | 556 | 376 | 355 | 40 | 62 |



George Taylor & Company Lifting Gear (Midlands) Ltd. Brickyard Road, Aldridge, West Midlands WS9 8SR

Telephone: 01922 457916 or visit: www.gtlifting.co.uk

ALL OFFERS ARE SUBJECT TO OUR CONDITIONS OF BUSINESS