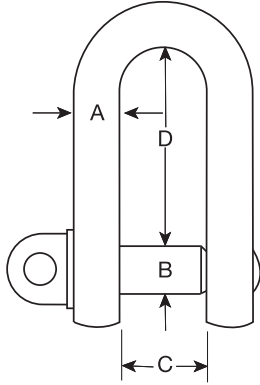


Commercial Shackle Dee Type Screw Collar Pin



- Mild steel, not heat treated.
- Electro galvanised and hot dip galvanised.
- Untested, not to be used for lifting.

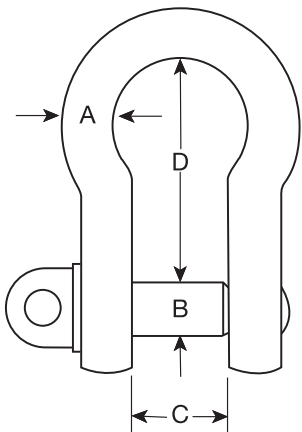


electro galv code	hot dip galv code	A (mm)	B (mm)	C (mm)	D (mm)	weight (kgs/100)
C0101	C0151	5	5	10	19	1.9
C0102	C0152	6	6	13	25	3.4
C0103	C0153	8	8	16	32	7
C0104	C0154	10	10	19	38	13
C0105	C0155	11	11	22	44	17.5
C0106	C0156	12	12	25	51	24
C0107	-	12	16	28	56	40
C0108	C0157	16	16	32	64	50
C0120	-	16	19	32	64	65
C0109	C0158	19	19	38	76	80
C0121	-	19	22	38	76	100
C0110	-	22	22	44	89	130
C0111	-	22	25	43	89	170
C0112	-	25	25	51	100	200
C0113	-	25	28	49	100	240

Commercial Shackle Bow Type Screw Collar Pin



- Mild steel, not heat treated.
- Electro galvanised and hot dip galvanised.
- Untested, not to be used for lifting.



electro galv code	hot dip galv code	A (mm)	B (mm)	C (mm)	D (mm)	weight (kgs/100)
C0201	C0251	5	5	10	19	1.9
C0202	C0252	6	6	13	25	3.4
C0203	C0253	8	8	16	35	7
C0204	C0254	10	10	19	38	13
C0205	C0255	11	11	22	46	19
C0206	C0256	12	12	25	51	26
C0207	-	12	16	27	60	39
C0208	C0257	16	16	32	64	50
C0209	-	16	19	33	70	70
C0210	C0258	19	19	38	76	80
C0213	-	19	22	38	80	110
C0211	C0259	22	22	44	89	130
C0214	-	22	25	43	95	170
C0212	-	25	25	51	100	200



George Taylor & Company Lifting Gear (Midlands) Ltd. Brickyard Road, Aldridge, West Midlands WS9 8SR

Telephone: 01922 457916 or visit: www.gtlifting.co.uk

ALL OFFERS ARE SUBJECT TO OUR CONDITIONS OF BUSINESS