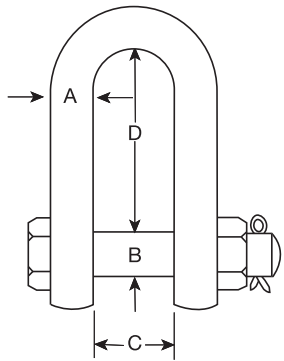
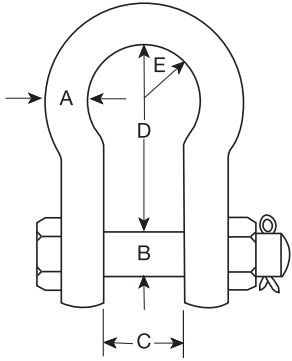


GT Blue Pin Standard Bow and Dee Shackles With Safety Nut And Bolt Pin



- Grade 6 high tensile steel body and pin, quenched and tempered.
- Meets the performance requirements of EN 13889 from sizes ½ tonne through to 25 tonne.
- Meets the performance requirements of US Fed Spec RR C 271.
- Proof load tested to 2 times the W.L.L.
- Minimum breaking load is 6 times the W.L.L.
- Hot dipped galvanised.
- Marked with manufacturers mark, size, ID mark and W.L.L.



code Bow	code Dee	W.L.L. (tonnes)	A (mm)	B (mm)	C (mm)	D Bow (mm)	D Dee (mm)	2E (mm)	Weight Kgs/each
A1302	-	0.50	6.4	8.0	12.0	28.6	~	20	0.07
A1303	-	0.75	8.0	10.0	13.0	31.0	~	21	0.13
A1304	-	1.00	9.5	12.0	17.0	36.5	~	26	0.17
A1305	A1405	1.50	11.0	12.0	18.0	42.5	~	29	0.25
A1306	A1406	2.00	12.7	16.0	20.6	47.3	41.3	32	0.44
A1307	A1407	3.25	16.0	19.8	27.0	60.5	51.0	43	0.79
A1308	A1408	4.75	19.0	22.0	32.0	71.5	62.0	51	1.26
A1309	A1409	6.50	22.0	27.0	36.6	84.0	74.8	58	1.88
A1310	A1410	8.50	25.0	30.0	43.0	96.0	81.0	68	2.78
A1311	A1411	9.50	28.5	33.0	46.0	108.0	89.5	75	3.87
A1312	A1412	12.00	31.8	36.0	51.6	119.0	100.8	83	5.26
A1313	A1413	13.50	34.9	39.0	57.0	133.5	112.5	92	6.94
A1314	A1414	17.00	38.0	42.0	60.0	147.0	125.0	99	8.79
A1315	A1415	25.00	44.0	52.0	73.0	178.0	140.5	126	14.99
A1316	A1416	35.00	50.0	56.0	82.0	197.0	171.5	138	20.65
A1317	A1417	55.00	63.5	68.0	105.0	267.0	203.0	180	41.05
A1318	-	85.00	75.0	85.0	127.0	320.0	230.0	190	62.00



George Taylor & Company Lifting Gear (Midlands) Ltd. Brickyard Road, Aldridge, West Midlands WS9 8SR

Telephone: 01922 457916 or visit: www.gtlifting.co.uk

ALL OFFERS ARE SUBJECT TO OUR CONDITIONS OF BUSINESS