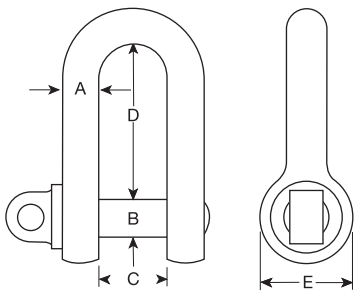
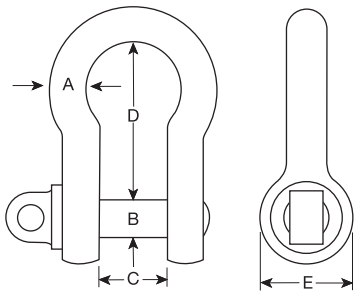


## GT Blue Pin Standard Bow and Dee Shackles with Screw Pin



- Grade 6 high tensile steel body and pin, quenched and tempered.
- Meets the performance requirements of EN 13889 from sizes ½ tonne through to 25 tonne.
- Meets the performance requirements of US Fed Spec RR C 271.
- Proof load tested to 2 times the W.L.L.
- Minimum breaking load is 6 times the W.L.L.
- Hot dipped galvanised.
- Marked with manufacturers mark, size, ID mark and W.L.L.



code bow	code dee	W.L.L (tonnes)	A (mm)	B (mm)	C (mm)	D Bow (mm)	D Dee (mm)	2E (mm)	Weight (kgs/100)
A1101	-	0.33	5	6	9.5	22	-	16	0.02
A1102	A1202	0.5	6.4	8	12	28.6	22	20	0.06
A1103	A1203	0.75	8	10	13	31	26	21	0.11
A1104	A1204	1	9.5	11	17	36.5	32	26	0.15
A1105	A1205	1.5	11	12	18	42.5	36.5	29	0.21
A1106	A1206	2	12.7	16	20.6	47.3	41.3	32	0.37
A1107	A1207	3.25	16	19.8	27	60.5	51	43	0.65
A1108	A1208	4.75	19	22	32	71.5	62	51	1.04
A1109	A1209	6.5	21.7	27	36.6	84	74.8	58	1.56
A1110	A1210	8.5	25.4	30	43	96	81	68	2.32
A1111	A1211	9.5	28.5	33	46	108	90	75	3.28
A1112	A1212	12	31.5	36	51.6	119	100.8	83	4.51
A1113	A1213	13.5	34.9	39	57	133.5	112.5	92	5.93
A1114	A1214	17	38	42	60	147	125	99	7.89
A1115	A1215	25	44	52	73	178	146.5	126	13.4
A1116	A1216	35	50	56	82	197	171	138	18.85
A1117	A1217	55	63.5	68	105	267.5	203	180	37.86



George Taylor & Company Lifting Gear (Midlands) Ltd. Brickyard Road, Aldridge, West Midlands WS9 8SR

Telephone: 01922 457916 or visit: [www.gtlifting.co.uk](http://www.gtlifting.co.uk)

ALL OFFERS ARE SUBJECT TO OUR CONDITIONS OF BUSINESS