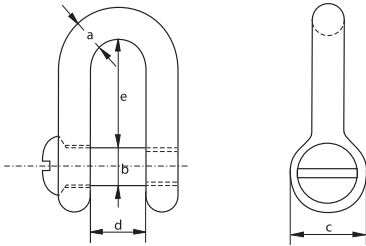


## Commercial Shackles Dee Type Countersunk Pin



- Mild Steel, not heat treated.
- Grade 3.
- Electro galvanised and hot dip galvanised.
- Untested, not to be used for lifting

diameter bow a (mm)	diameter pin b (mm)	diameter eye c (mm)	width inside d (mm)	length inside e (mm)	weight per 100 pcs (kg)
8	8	16	16	32	5.72
10	10	20	20	40	11.2
11	11	22	22	44	14.9
12	12	24	24	48	19.3
14	14	28	28	56	30.7
16	16	32	32	64	45.8
20	20	40	40	80	89.5
22	22	44	44	88	119
25	25	50	50	100	175

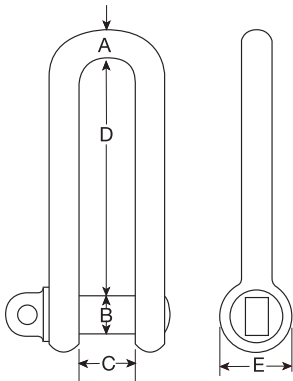


## Long Dee Piling Shackle c/w Screw Collar Pin



- Higher tensile steel, body and pin.
- Proof load tested to 2 times the W.L.L.
- Minimum breaking load is 4 times the W.L.L.
- Self coloured finish.
- Marked with manufacturers mark, size ID mark and W.L.L.

code	W.L.L (tonnes)	A (inches)	B (inches)	C (inches)	D (inches)	E (inches)	weight (kgs/each)
B1001	1.00	½	⅝	⅞	6	1 ¼	0.55
B1002	1.50	⅝	¾	1 ¼	8	1 ½	0.95
B1003	2.00	¾	⅞	1 ½	8	1 ¾	1.64
B1004	3.00	⅞	1	1 ¾	10	2	2.29
B1005	3.75	1	1 ⅝	2	10	2 ¼	3.40
B1006	5.00	1 ⅝	1 ¾	2 ⅝	12	2 ½	5.05



George Taylor & Company Lifting Gear (Midlands) Ltd. Brickyard Road, Aldridge, West Midlands WS9 8SR

Telephone: 01922 457916 or visit: [www.gtlifting.co.uk](http://www.gtlifting.co.uk)

ALL OFFERS ARE SUBJECT TO OUR CONDITIONS OF BUSINESS