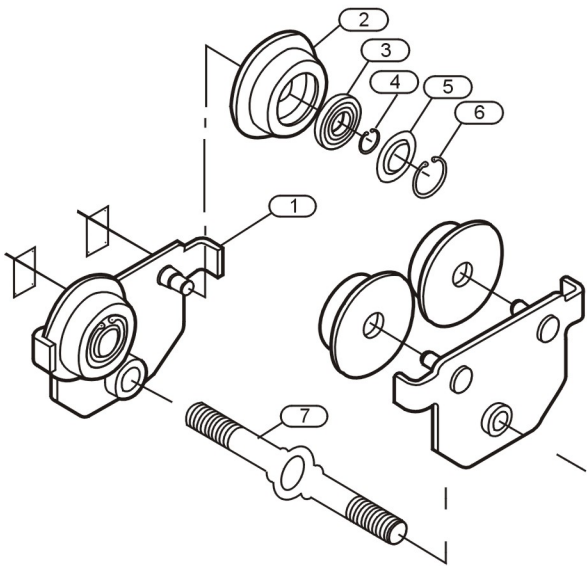
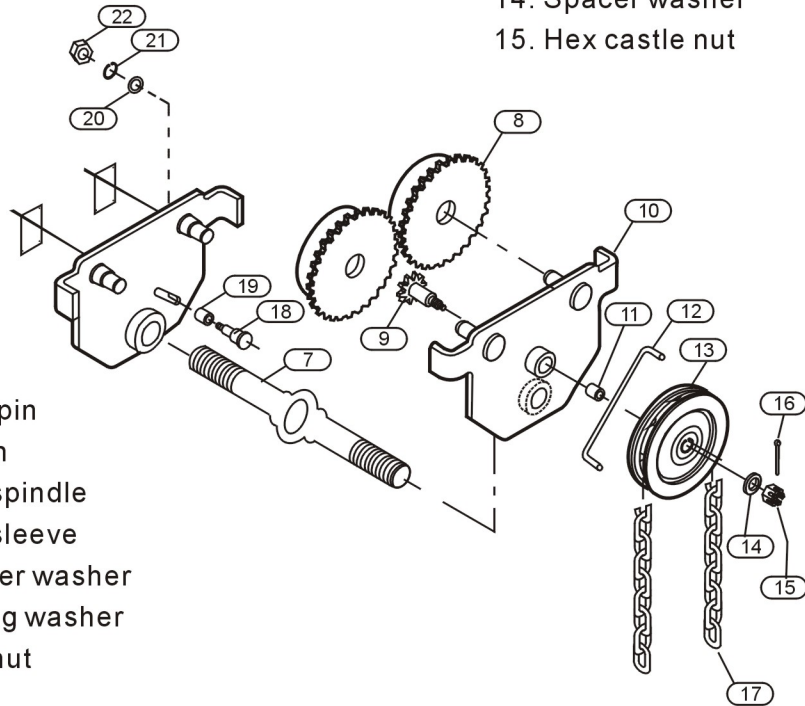


TROLLEY

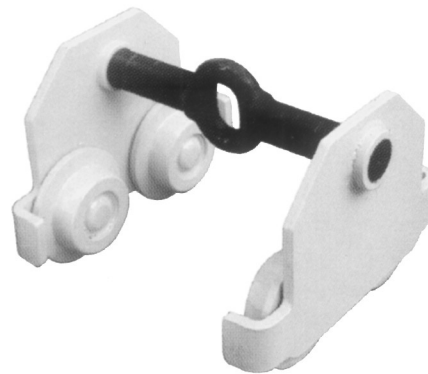
OPERATING INSTRUCTIONS



1. Two gear case assembly
2. Driven wheel
3. Bearing
4. Axle ring
5. Bearing ring
6. Hole ring
7. Equalizer pin
8. Tooth gear
9. Driven spindle
10. Right side gear case assembly
11. Copper sleeve
12. Catch pin
13. Chain wheel
14. Spacer washer
15. Hex castle nut



16. Split pin
17. Chain
18. Roll spindle
19. Roll sleeve
20. Spacer washer
21. Spring washer
22. Hex nut



FEATURES

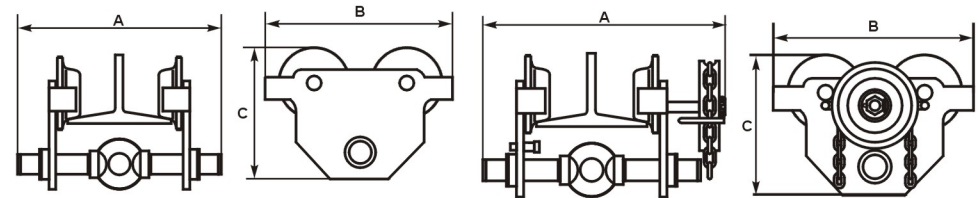
This series trolleys are divided into two kinds: plain trolley & geared trolley. the geared trolley is had operated by pulling the hand-chain & the plain trolley by pushing the load lifted. running on the bottom flange of monorail and swivel hanger pin to the range lit. the trolley to be attached with hand block becomes a conveyer.

ASSEMBLE AS FOLLOWS

- Measure the actual width of the runway beam;
- Assemble the required number of spacer washers equally to the inside of the trolley side plates so that swivel hanger pin trolley wheel flanges is 6mm greater than the runway beam width. Assemble the remaining washers outside the trolley side plate & fit nuts to hanger pin.
- Suspend the maximum safe working load form the trolley the run the unit slowly along the full length of the runway to ensure sahib factory operation.

PLAIN TROLLEY PARAMETER

Capacity	I-Beam Width	N.W./KGS	A	B	C	H
0.5t	50-220	5	285	198	158	64.5
1t	58-220	8.7	285	238	183	66
2t	66-220	13.9	300	277	208	75
3t	74-220	23.5	321	324	249	85
5t	90-220	40	354	373	296.5	100



PLAIN TROLLEY

GEARED TROLLEY

GEARED TROLLEY PARAMETER

Capacity	I-Beam Width	N.W./KGS	A	B	C	H
0.5t	50-220	9	352.5	198	158	64.5
1t	58-220	12.6	353.5	238	183	66
2t	66-220	18.5	362	277	208	75
3t	74-220	28	406.5	324	249	85
5t	90-220	45	434.5	373	296.5	100